

Earthly helps businesses and their customers to protect and regenerate the Earth through our high integrity, science-backed project marketplace of nature-based solutions that remove carbon, restore biodiversity and improve livelihoods.

Nature-based Solutions

From mangroves in Madagascar to forests in Peru, our projects are handpicked for their carbon-busting power and ability to restore biodiversity, and improve the livelihoods of local communities. These projects are the best way for businesses to mitigate their carbon footprint while reducing their emissions.



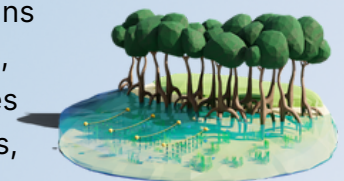
Project Assessment

To ensure every Earthly project offers high impact, we analyse 106 data points, aggregating information from data partners like BeZero and Google Earth Engine. Our methodology is transparent and enables you to compare verified & unverified projects that follow different standards and bodies (i.e. Verra, Plan Vivo, Gold Standard).



Engaging Visualisations

Communicating your sustainability efforts is a critical part of your plans that cannot be overlooked. It's important to be accurate, transparent, and inspiring. Earthly offers storytelling and communication resources like the 3D island and impact dashboard that engage your employees, customers, partners, etc. in your climate journey.



Bringing value to business all over the world

S&P Global

crowdcube

ACTIVISION

MetLife

innocent

CaixaBank

L'ORÉAL

Envision

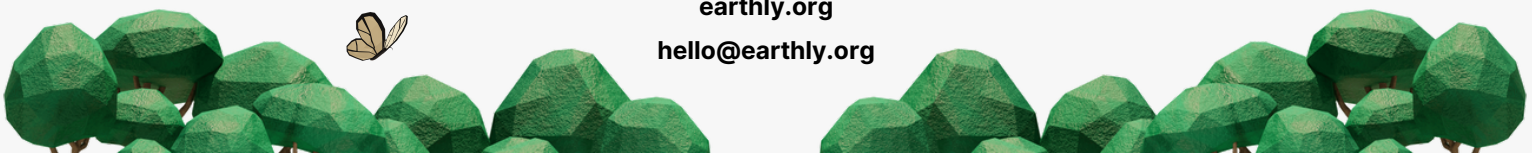
VOLCAFE

Lemonade

savills

ARTEMIS
EDUCATION

earthly.org
hello@earthly.org



Our Products

Marketplace

Purchase carbon credits, invest in high-quality nature-based projects, or plant trees on behalf of your employees or customers. All Earthly projects have been approved by our Scientific Advisory Board and scored using our industry-first project assessment.



Climate Positive Business

Complement your reduction strategy by going beyond net-zero to balance 110% of your business impact. Invest in high-quality nature-based solutions and you'll earn a certification as a Climate Positive Business.



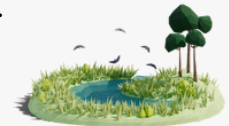
Automated Investment

Maximise your positive impact by embedding Earthly into your business. You can link nature investments directly to purchases, rewards programs, or business milestones. You can integrate Earthly into your website, app, or internal systems.



Origination

Earthly offers support with Project Origination, helping you to secure cost-effective multi-year project development agreements for high-integrity carbon credits that align with your business goals and sustainability efforts.



Supported by:

